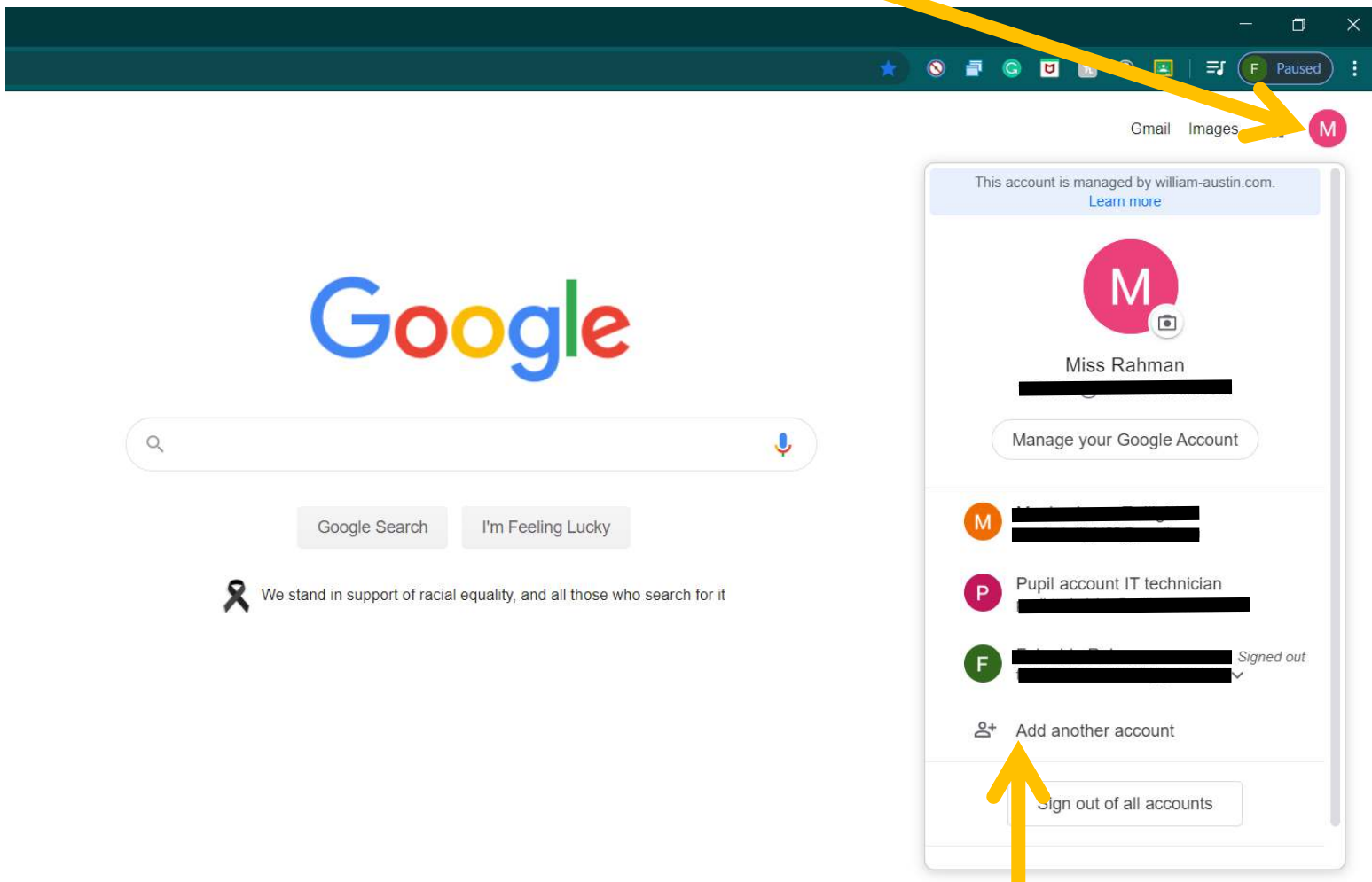


How to add another account if you are already logged in with another gmail account to access Google classroom.

If you are already logged into your device, with your own Gmail account then this will not work with google classroom and you will need to add your child's email account in order to gain access to classrooms. To do this on a computer, android or apple device please follow the instructions below.

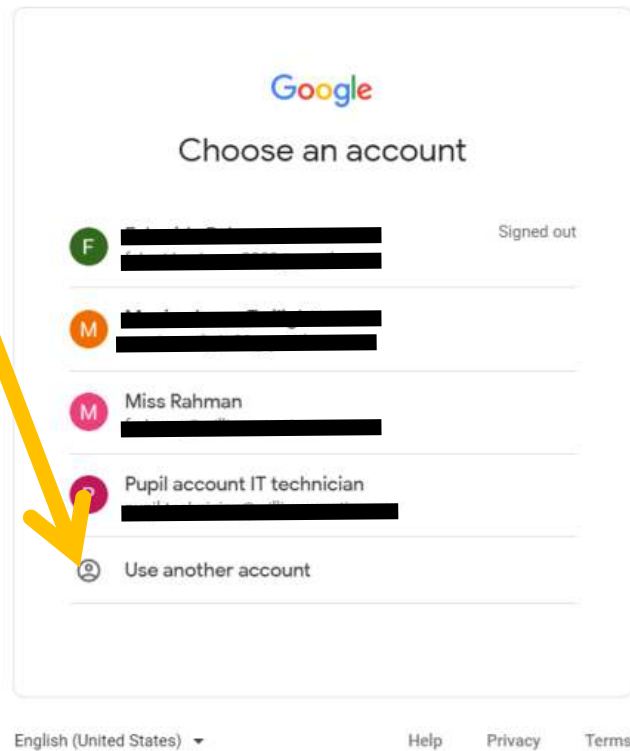
On a computer:

- After going to <https://www.google.co.uk/> on your browser, on the top right hand corner of the page, you will see a coloured circle with a letter in it. Click on this circle letter icon. This will bring up a list showing all the Gmail accounts that you have linked on your device.

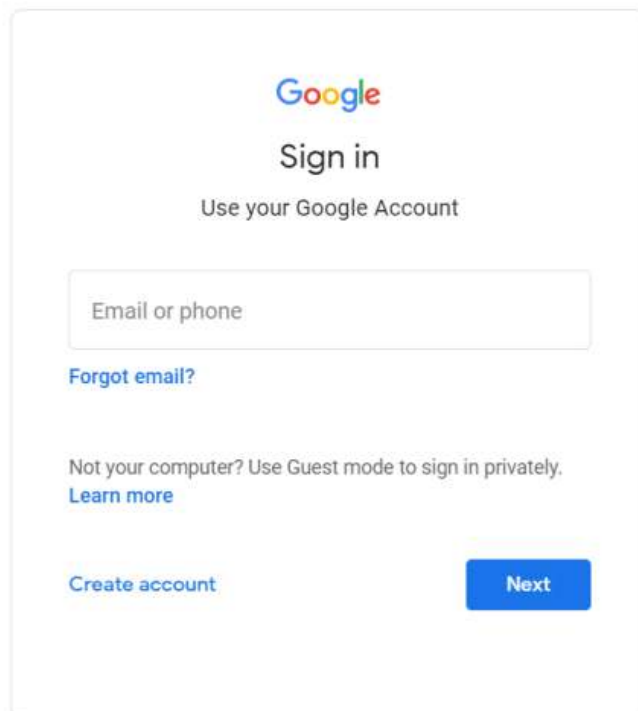


- At the bottom of the list, you should see an option that says '**add another account**'. Click on this option.

- You will be directed to another page displaying all your Gmail accounts, click on **'use another account'**.



- Then you will be prompted to enter the email address and password for your child's account.



After you have signed in you now have access to google classroom. Please follow the **Parents Google classroom guide for Computer users** on the school website for further guidance.

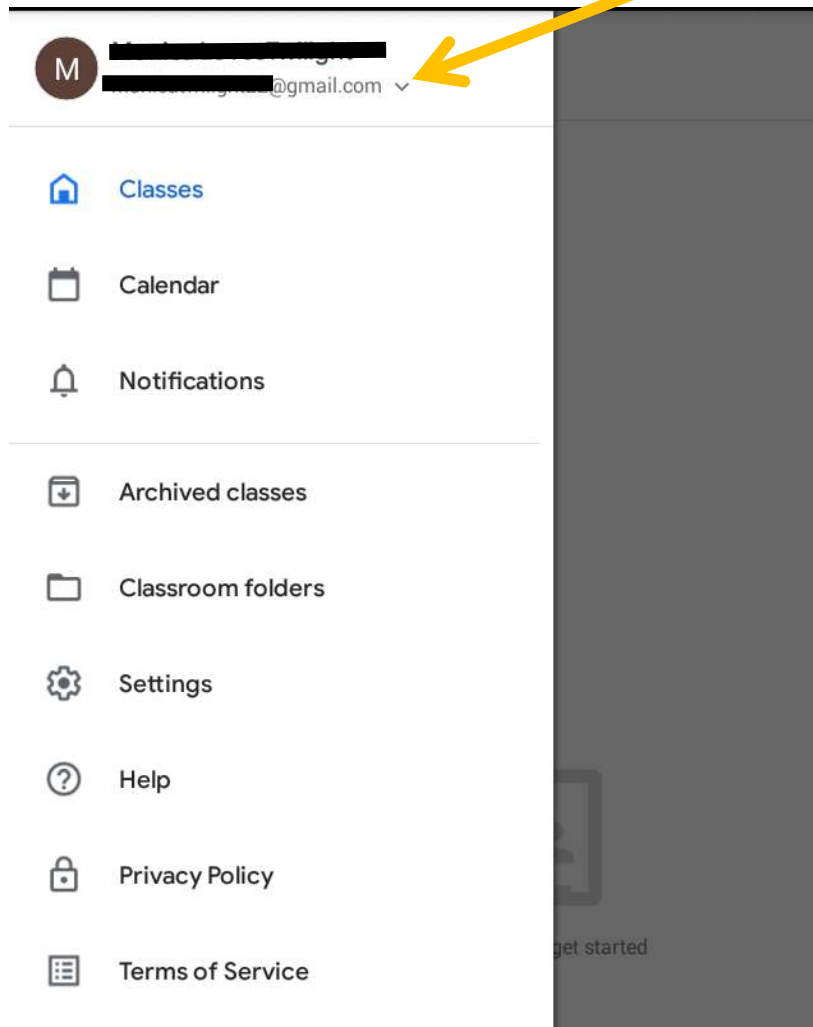
Android users:

1. Open Google classroom App and press on the 3 lines icon on the top left of the screen, next to where it says google classroom.

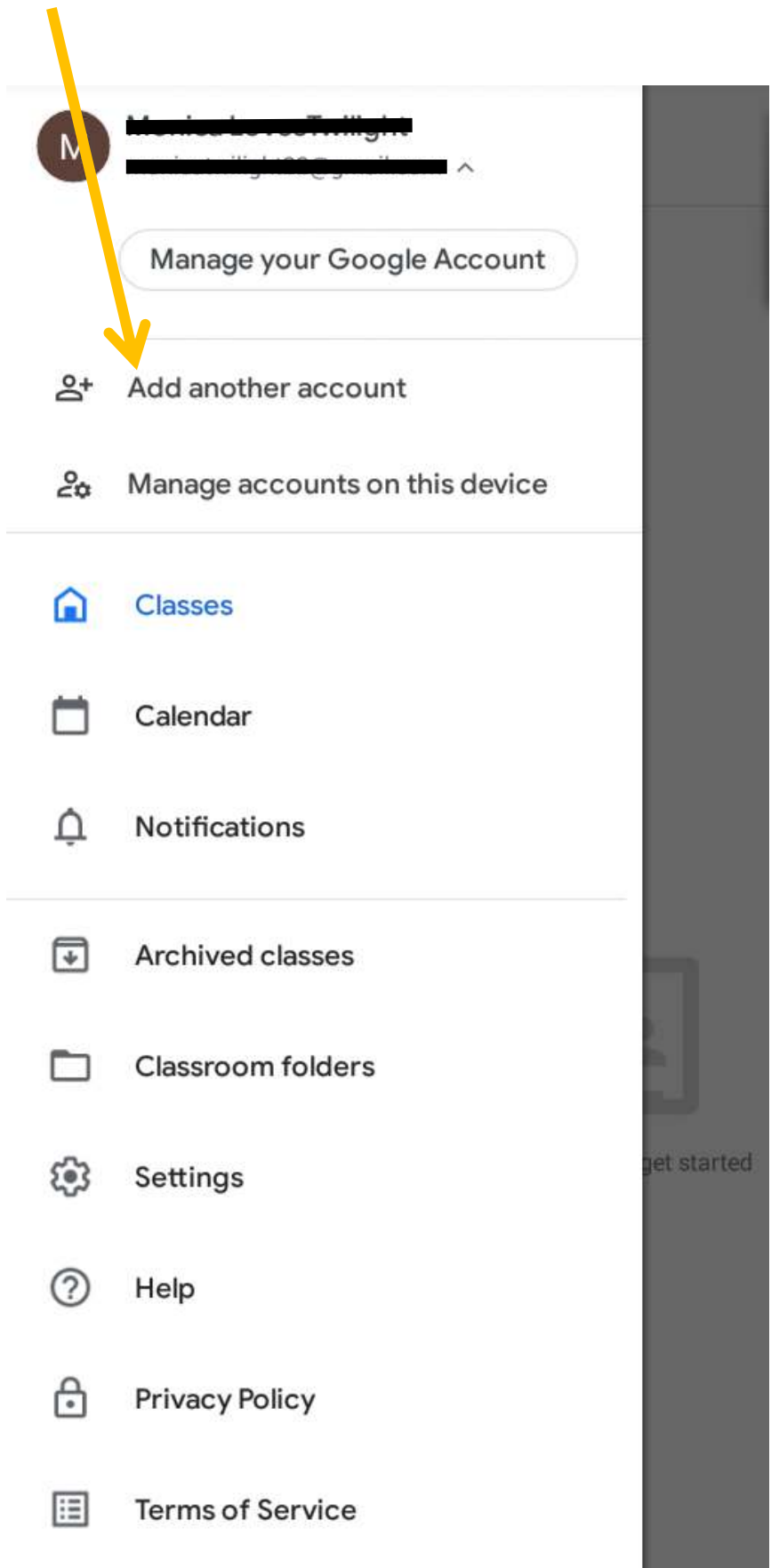


Create a class to get started

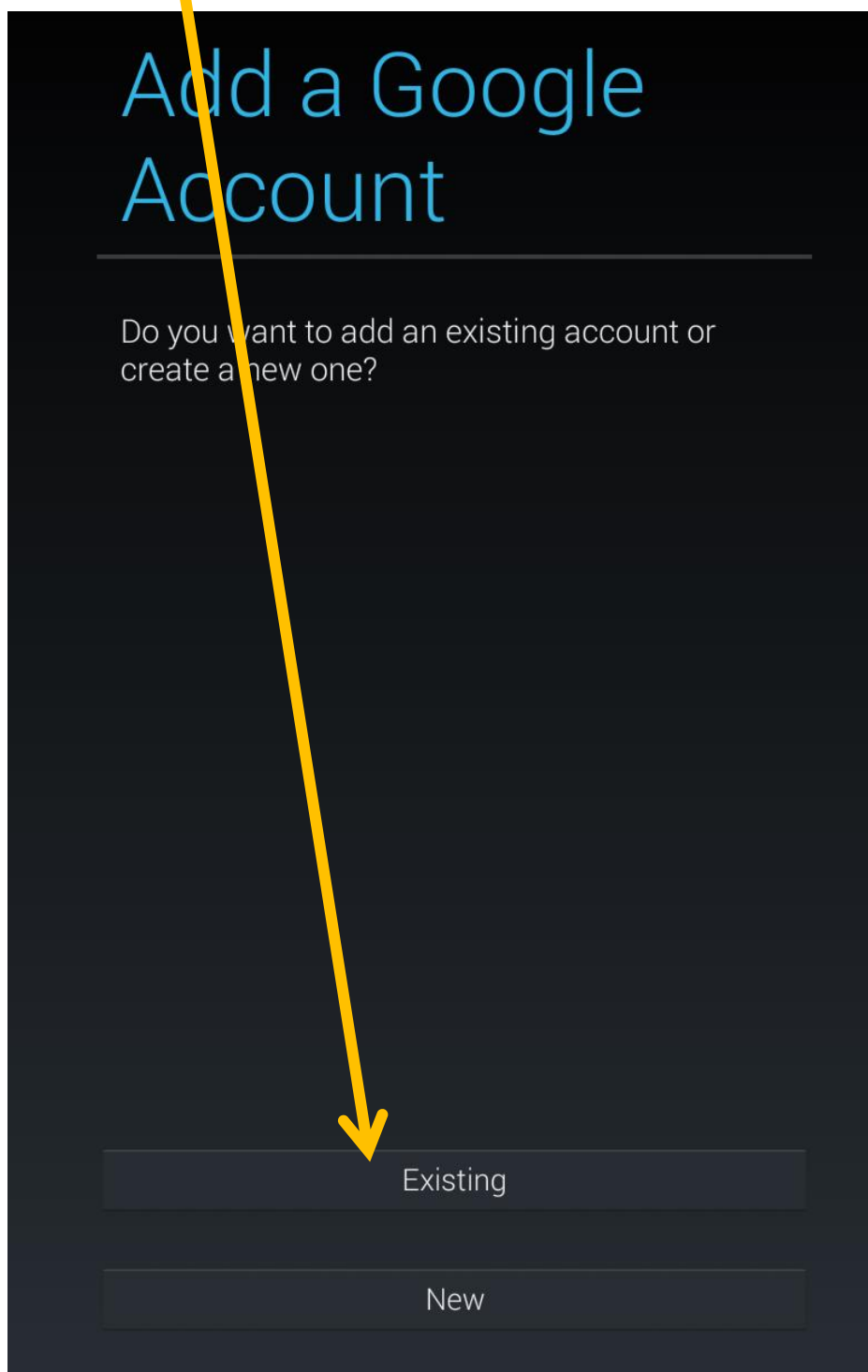
2. You will see the menu list appear. At the top, you will see your account name and email that you may have previously signed in with. Press on the down arrow next to the email address.



1. After clicking the down arrow, you should see the menu below appear, then click on **'Add another account'**.



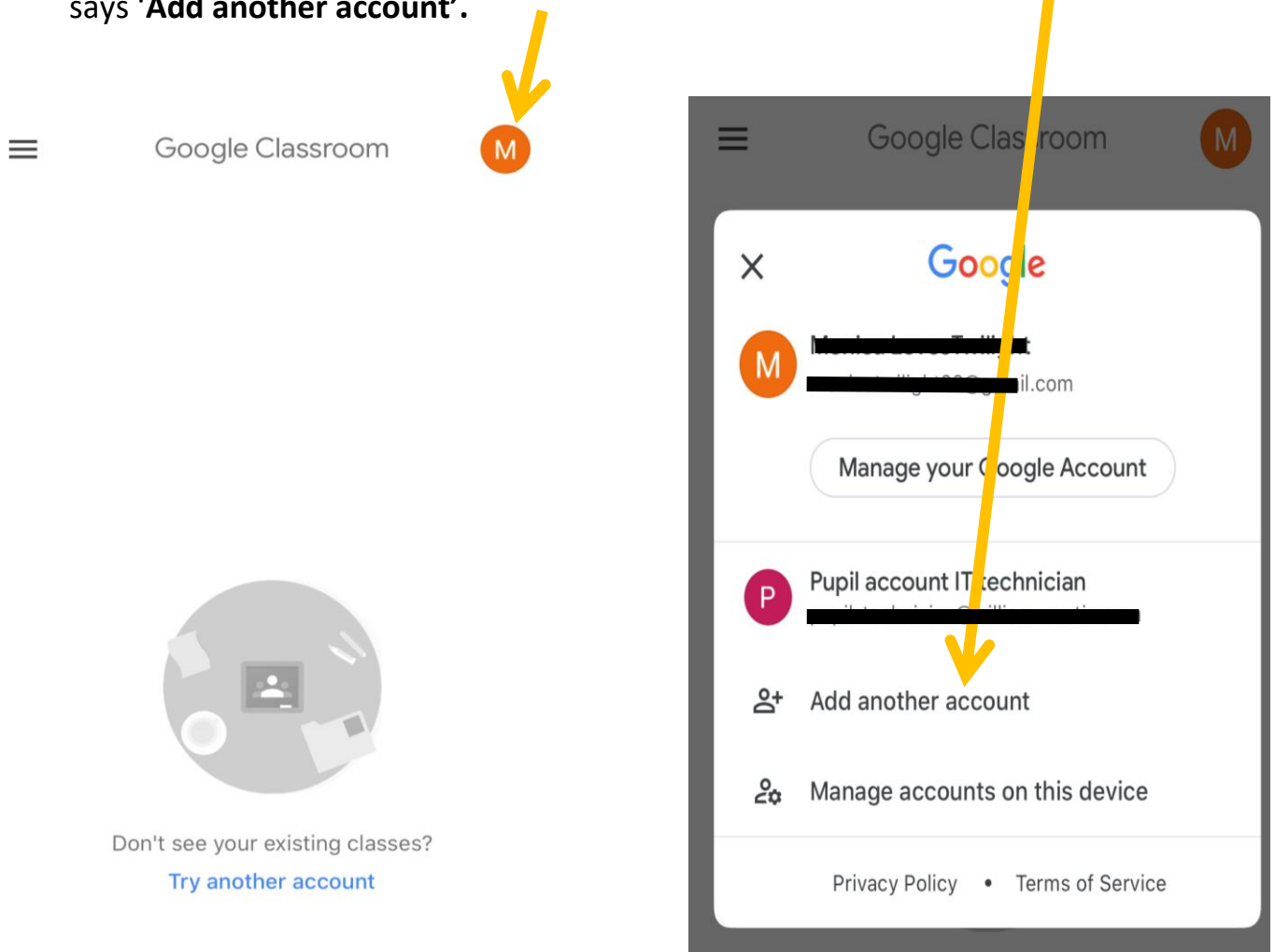
2. Then you will be asked if you want to create a new account or add an existing account. Press **'existing'**.



3. Then enter your child's email address and password to log into Google classroom. You will have then successfully logged in. Please look at the **Parents Google classroom guide for Tablet and smartphone users** on the school website for further guidance.

Apple device users:

- Open the google classroom app. If you have previously signed in with another Gmail account on your device, you should see a page like below. In the top right hand corner, you should see a coloured circle with a letter inside of it. Click on this icon and you should see a list of other Gmail accounts on your device. Click on where it says '**Add another account**'.



- Then enter the email and password of your child's account. You will have then successfully logged in. Please look at the **Parents Google classroom guide for Tablet and smartphone users** on the school website for further guidance.